



CLIMATE-READY TREES

Planting a Tree? Select from our list of trees that thrive in our high desert environment!

Taos, Picuris, Raton, Las Vegas, or Gallup

LARGE TREES (APPROX. 50+FT)

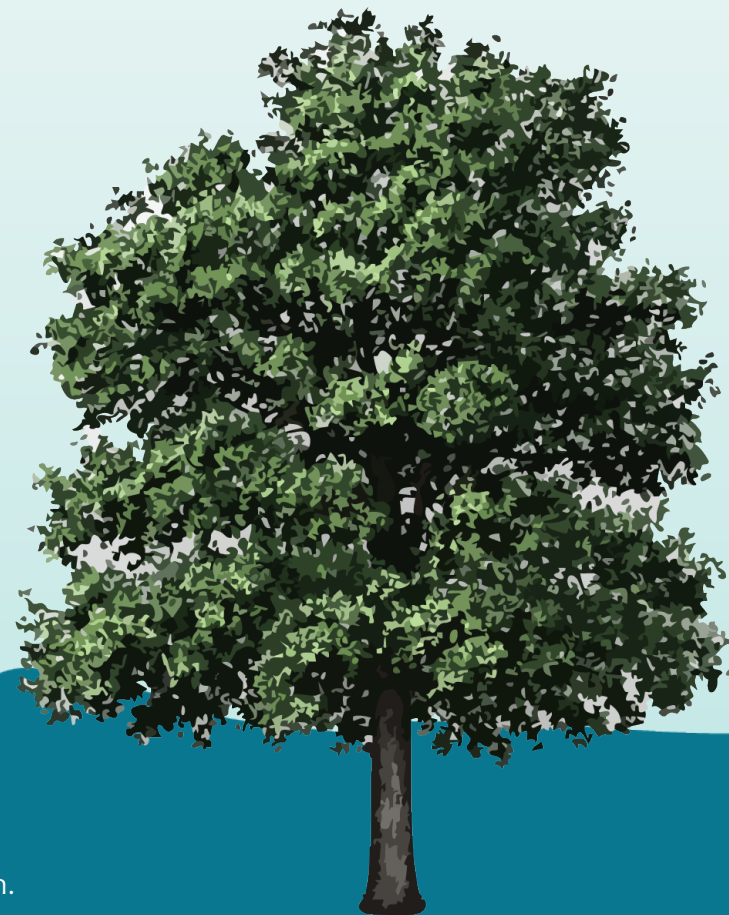
- Altas Cedar (*Cedrus atlantica*) 💧💧
- Austrian (Black) Pine (*Pinus nigra*) 💧💧
- Chinquapin Oak (*Quercus muehlenbergii*) 💧💧
- Common Hackberry (*Celtis occidentalis*) 💧💧

MEDIUM TREES (APPROX. 30-50FT)

- Box Elder (*Acer negundo*) 💧💧
- Frontier Elm (*Ulmus 'Frontier'*) 💧💧
- 'Hot Wings' Maple (*Acer tartaricum*) 💧💧
- Osage Orange 'White Shield' (*Maclura pomifera*) 💧💧
- Western Soapberry (*Sapindus saponaria var. drummondii*) 💧

SMALL TREES (LESS THAN 30FT)

- Carriere Hawthorn (*Crataegus x lavalleyi*) 💧💧💧
- New Mexico Olive (*Forestiera neomexicana*) 💧
- Prairie Flameleaf Sumac (*Rhus lanceolata*) 💧
- Redbud (*Cercis canadensis*) 💧💧
- Smoketree (*Cotinus obovatus*) 💧



These are just a few suggestions based on local expert opinions from Alliance members. Tree selection depends on many site factors to plant the right tree in the right place. Visit <https://www.arborday.org/planning-selection-location> for more input on tree selection.

